





3



1



1

- Semi-Detached House
- Three Bedrooms
- Front & Rear Gardens
- Local Amenities
- Freehold Interest
- No Upper Chain
- Ample Storage
- Off-Street Parking
- Transport Links
- Council Tax Band: A





** 360° Tour | <https://www.madesnappy.co.uk/tour/1gfd7g21809> **

Jan Forster Estates welcome to the market this three-bedroom, semi-detached family house in Blakelaw. The property is offered for sale with the benefit of no upper chain.

This home enjoys an excellent location with a wide range of local amenities close by. Well-regarded schools, St James' Retail Park, and the A1 motorway are all within easy reach, providing superb connectivity for both commuting and leisure. Frequent public transport links also offer convenient access into Newcastle city centre.

The accommodation briefly comprises to the ground floor: an entrance hallway, a lounge with access to the well-appointed kitchen-diner fitted with a range of wall and base units and sliding doors opening onto the rear garden, along with a convenient understairs storage cupboard. To the first floor, the landing leads to three bedrooms- the main one benefiting from built-in wardrobes and a storage cupboard, together with a family bathroom WC.



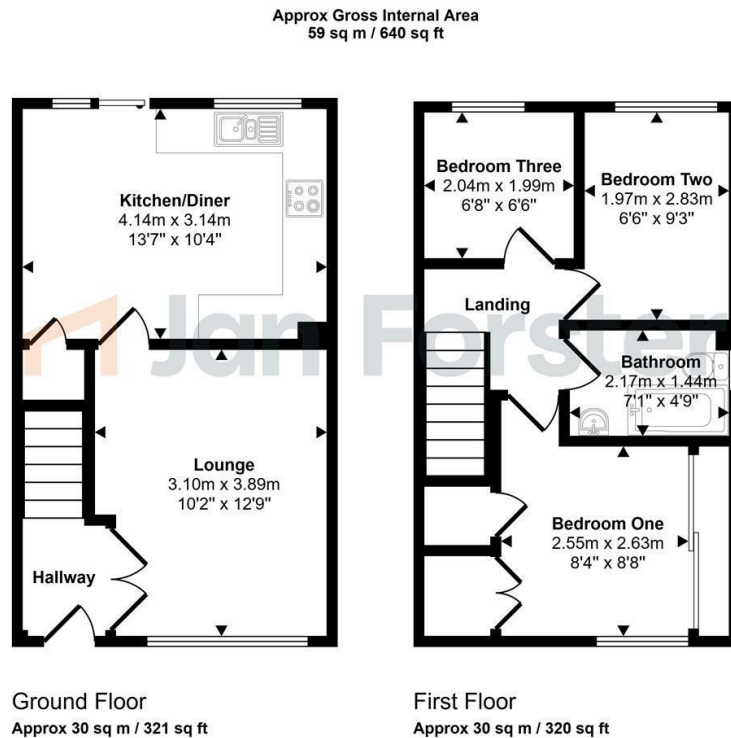
Externally, the property offers a generous driveway to the front providing off-street parking for multiple cars and a low-maintenance garden with artificial lawn. To the rear, there is a private garden featuring both lawned and patio areas, perfect for outdoor dining and entertaining during the summer months, as well as a shed providing useful storage space.

For more information and to book a viewing, please, call our sales team on 0191 236 2070.

Tenure

The agent understands the property to be Freehold. However, this should be confirmed with a licenced legal representative.

Council Tax Band: A



This floorplan is only for illustrative purposes and is not to scale. Measurements of rooms, doors, windows, and any items are approximate and no responsibility is taken for any error, omission or mis-statement. Icons of items such as bathroom suites are representations only and may not look like the real items. Made with Made Snappy 360.

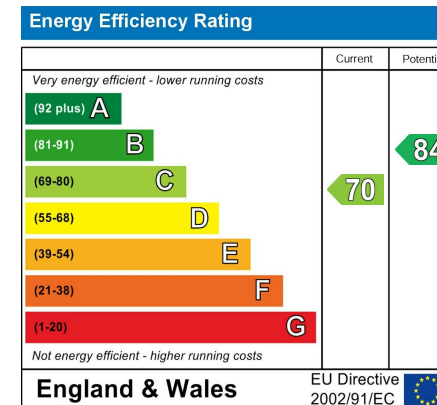
Lounge 12'9" x 10'2" (3.89 x 3.10)

Kitchen-Diner 13'6" x 10'3" (4.14 x 3.14)

Bedroom One 8'7" x 8'4" (2.63 x 2.55)

Bedroom Two 9'3" x 6'5" (2.83 x 1.97)

Bedroom Three 6'8" x 6'6" (2.04 x 1.99)



The difference between house and home

You may download, store and use the material for your own personal use and research. You may not republish, retransmit, redistribute or otherwise make the material available to any party or make the same available on any website, online service or bulletin board of your own or of any other party or make the same available in hard copy or in any other media without the website owner's express prior written consent. The website owner's copyright must remain on all reproductions of material taken from this website.



www.janforsterestates.com

Gosforth
High Heaton
Tynemouth
Property Management Centre

0191 236 2070
0191 270 1122
0191 257 2000
0191 236 2680

